

First Aid for Complex Partial (focal) seizures

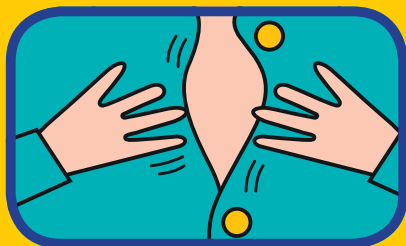
including temporal lobe seizures

Non-convulsive seizures in which awareness is affected but consciousness is not lost

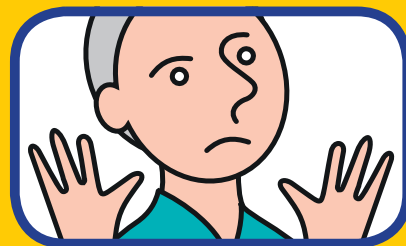
KNOW THE SIGNS



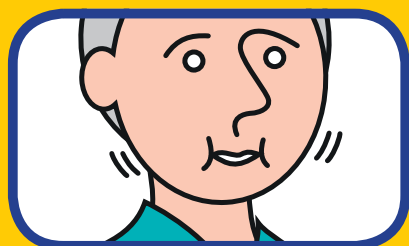
Wandering aimlessly



Fidgeting with clothing



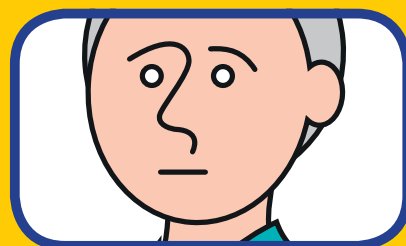
Agitated behaviour



Chewing & smacking of lips

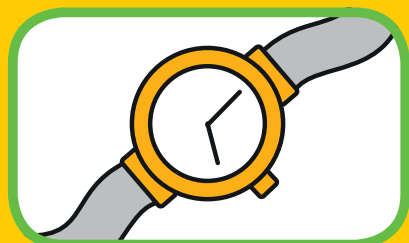


Confused or slurred speech



Staring trance-like

KNOW WHAT TO DO



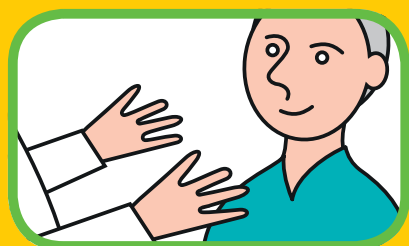
DO time the seizure



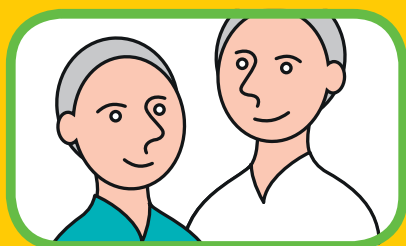
DON'T restrain or grab



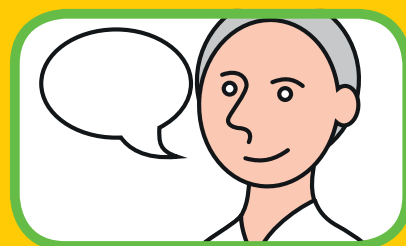
DO guide gently from danger



DO calmly reassure



DO stay until seizure ends



DO explain what happened



When to call an ambulance

- If the seizure is longer than 5 minutes
- If the person has more than one seizure
- If you know it is the person's first seizure
- If the person is injured
- If you are in any doubt



249 Crumlin Road, Dublin 12.
T: 01 4557500. info@epilepsy.ie
www.epilepsy.ie
[facebook.com/epilepsy.ie](https://www.facebook.com/epilepsy.ie)
[@epilepsyireland](https://www.instagram.com/epilepsyireland)